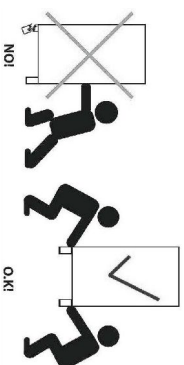
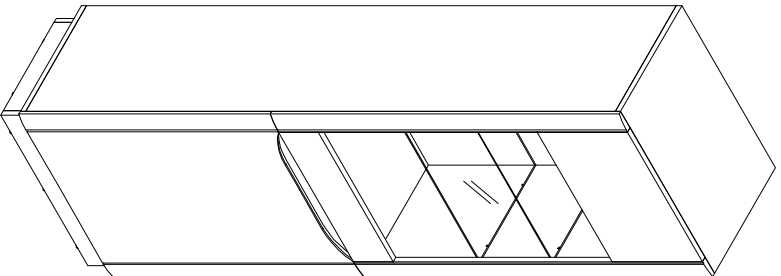


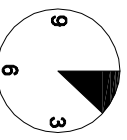
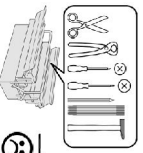
ANGEL

AWT60



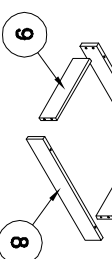
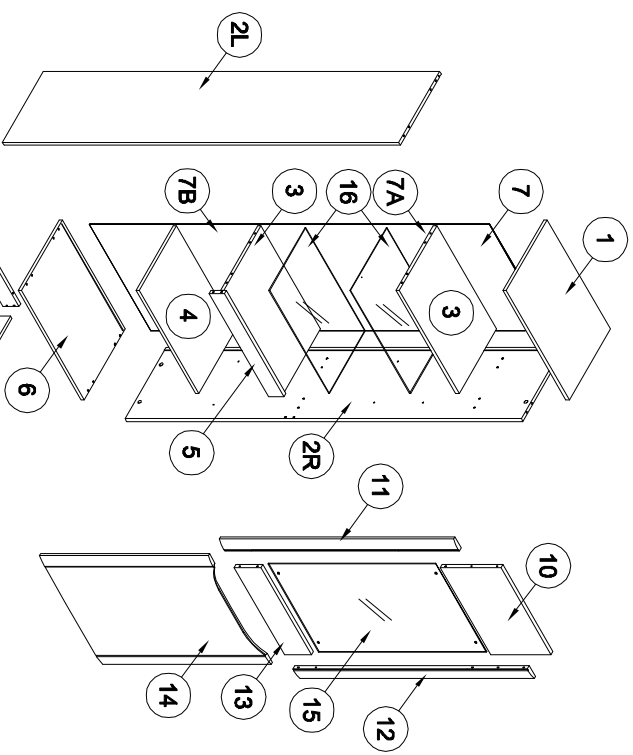
22.3.2018

- D** Montageanleitung
- FR** Notice de montage
- NL** Handleiding voor de montage
- CZ** Montážní návod
- HU** Szerelési útmutató
- TR** Montaj talimatı
- GB** Assembly Instructions
- IT** Istruzioni di montaggio
- PL** Instrukcja montażu
- SK** Návod na montáž
- RO** Instrucțiunile de montaj
- RU** Инструкции по монтажу

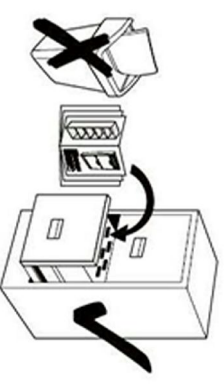
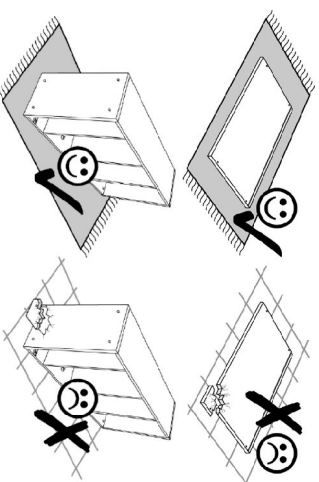


20 min.

1

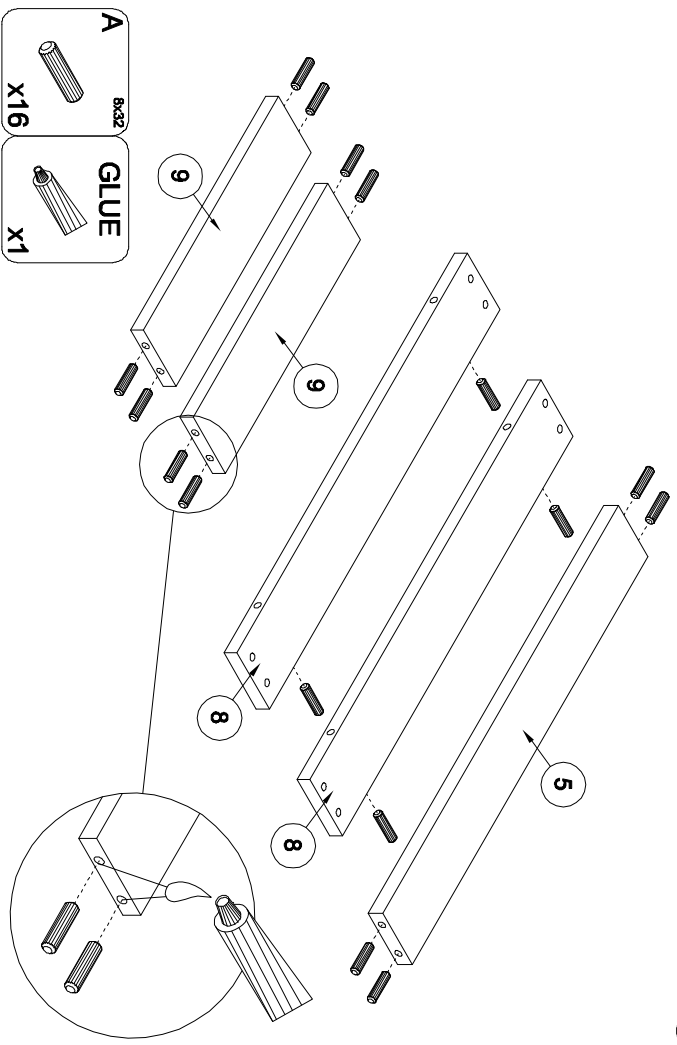


AB 6x38 x12	Z x16	SLZ x4	N 3x20 x10	X x18	ZC x10	GLUE x1	TB x1
A 6x32 x32	B x16	H 6x13 x10	RC mini x5	PC mini domyk x5	TA x1	ZE x8	Z x4
C x16	RC mini x5	ND 3.5x16 x11	ZD x4	NC 4x16 x4	ZE x8	Z x4	

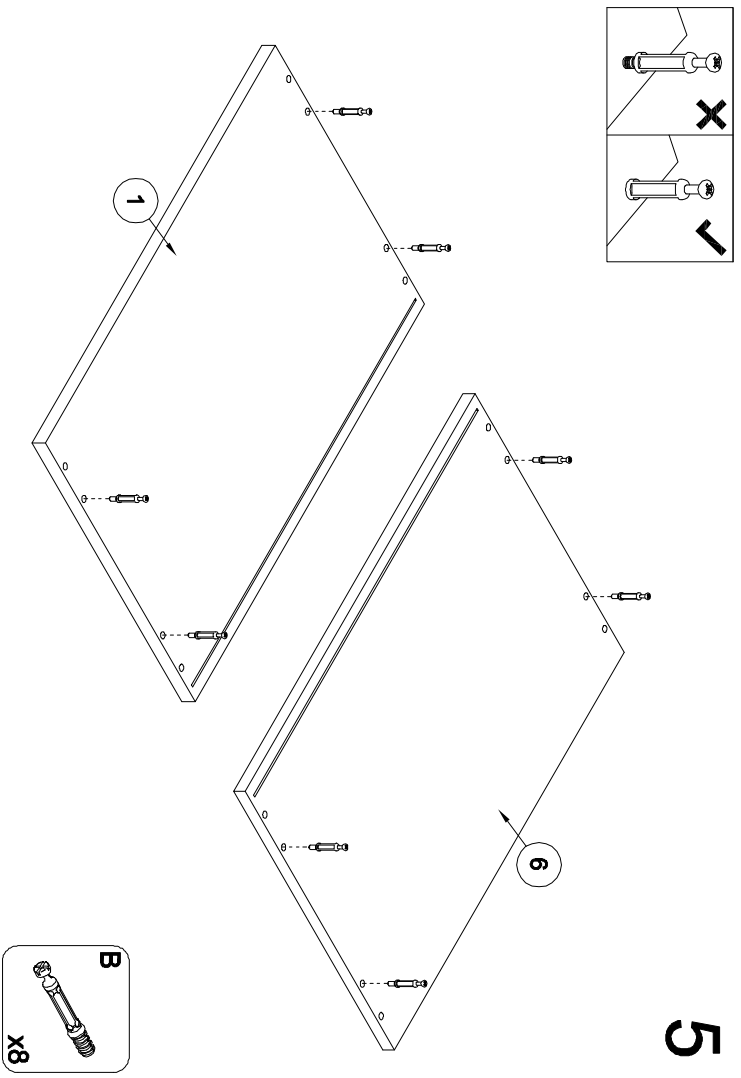


2

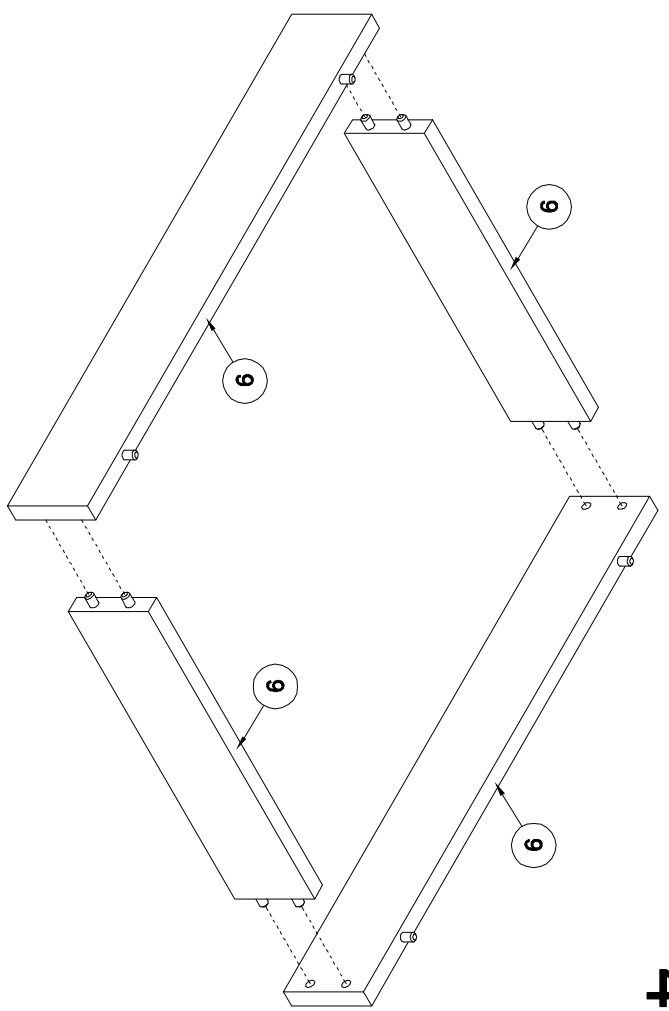
3



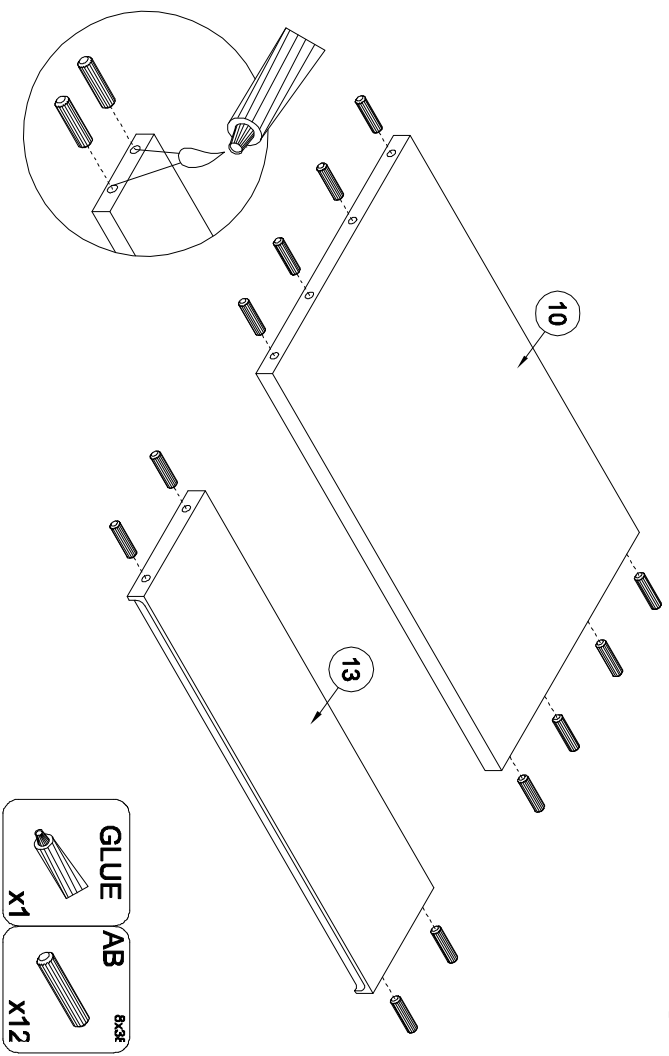
5



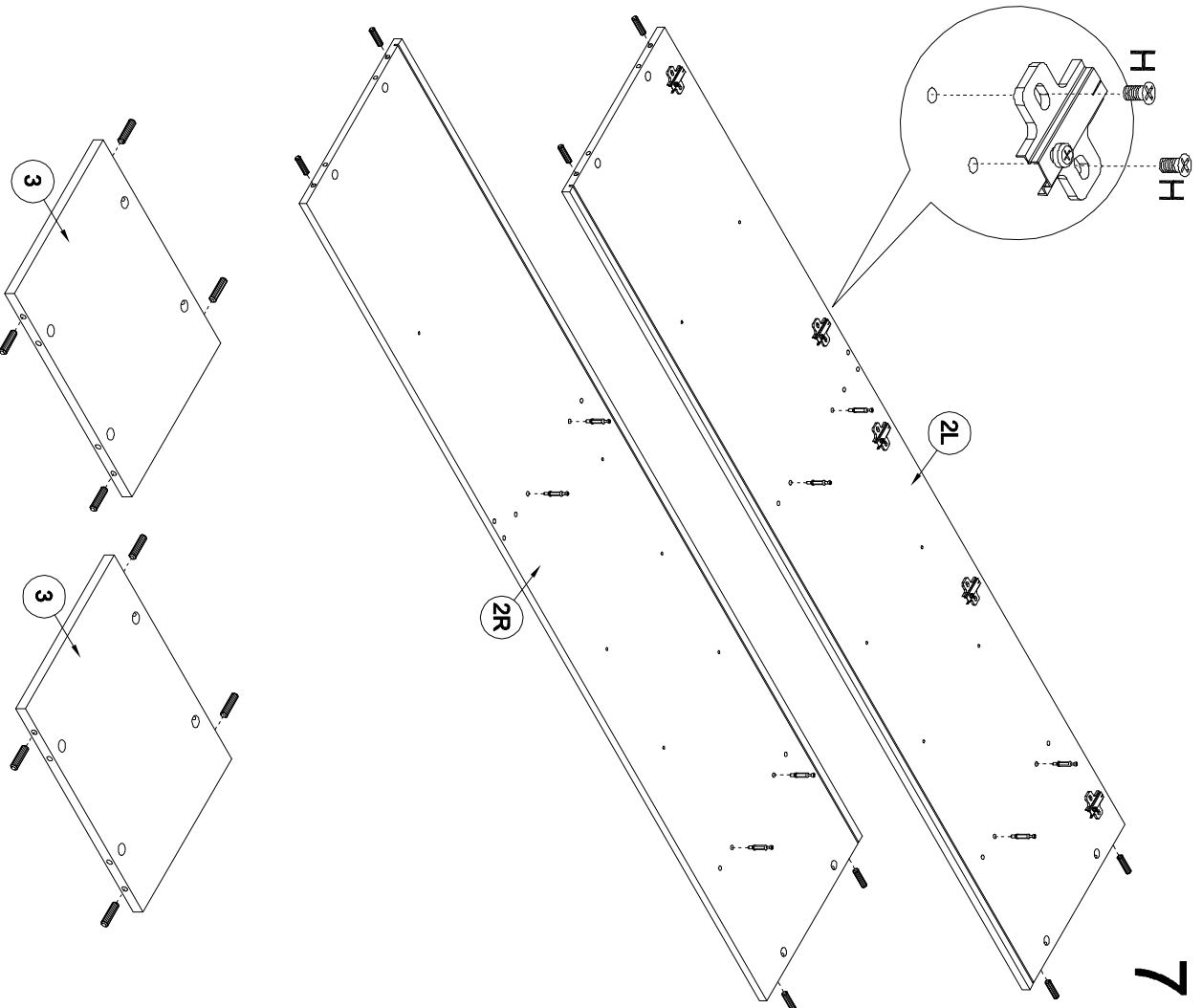
4



6

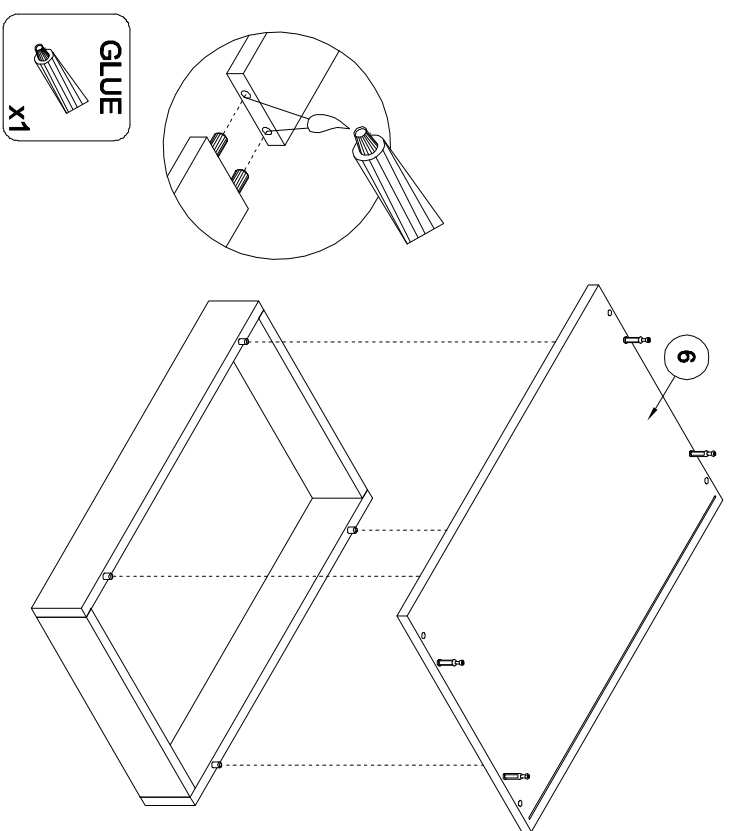


7

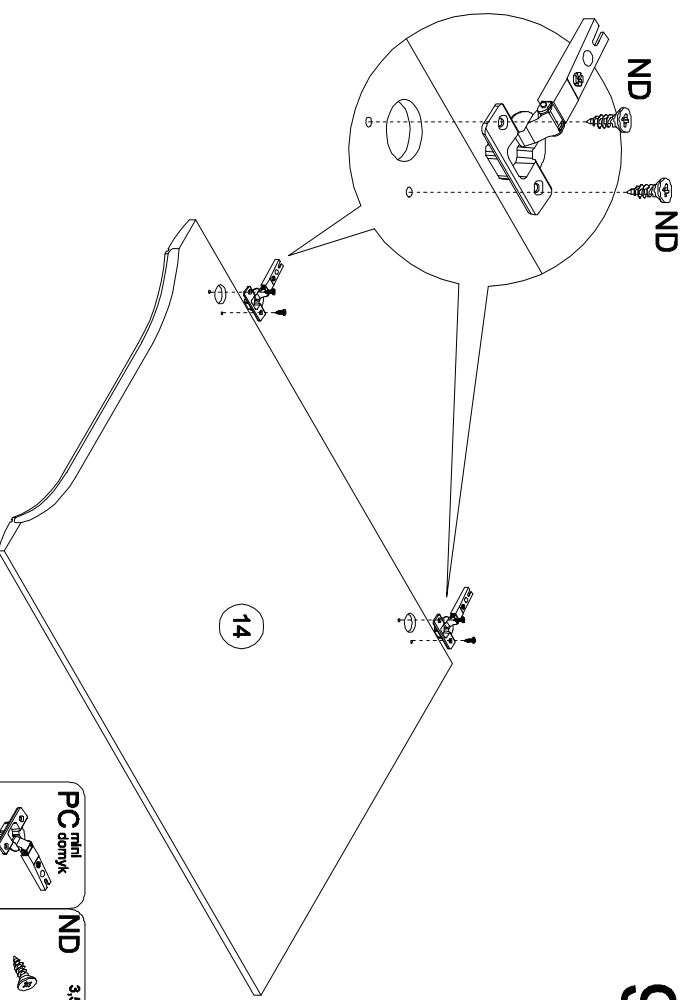


- | | |
|---------------------------|-------------------------|
| B
8x32
x8 | A
8x32
x16 |
| H
6.3x13
x10 | RC
x5 |

8

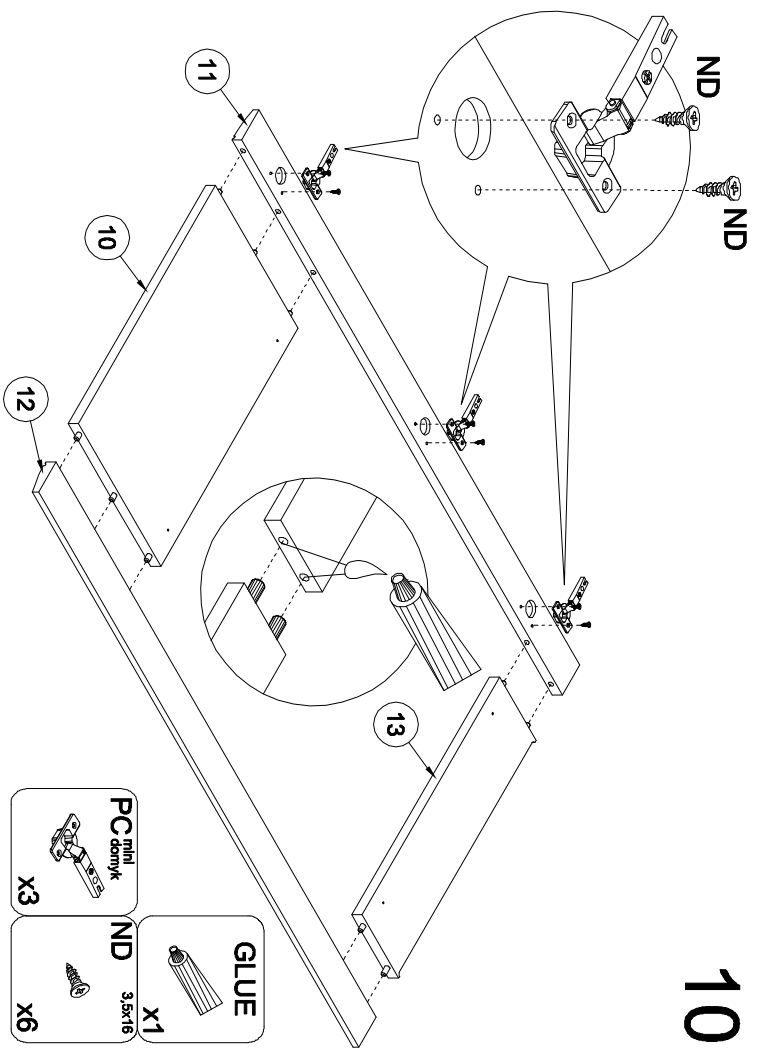


9

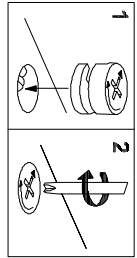


- | | |
|---------------------------------|---------------------------|
| PC
mhl
domyk
x2 | ND
3.5x16
x4 |
|---------------------------------|---------------------------|

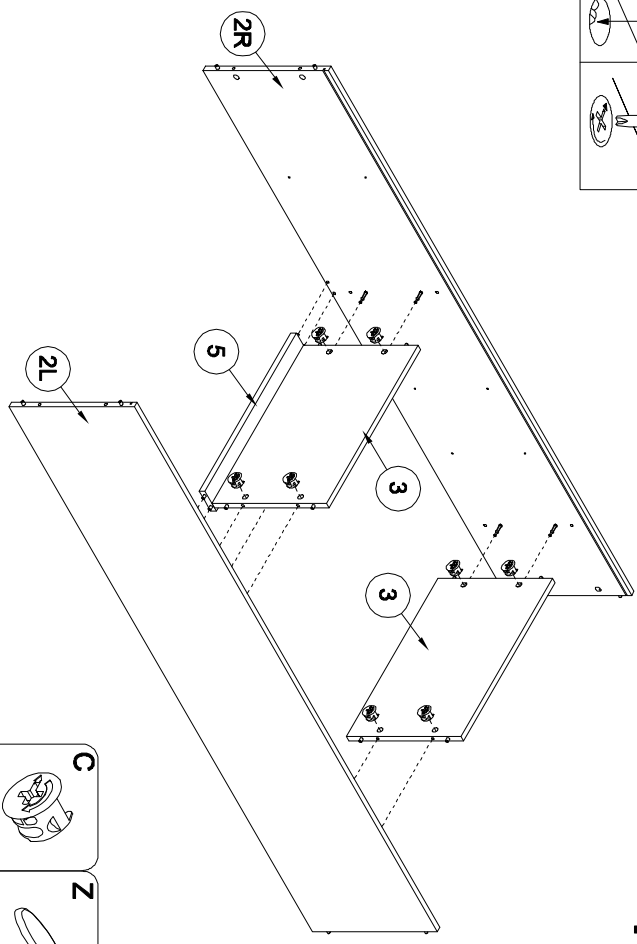
10



- GLUE**
X1
- PC** mini šroubovák
X3
- ND** 3,5x16
X6

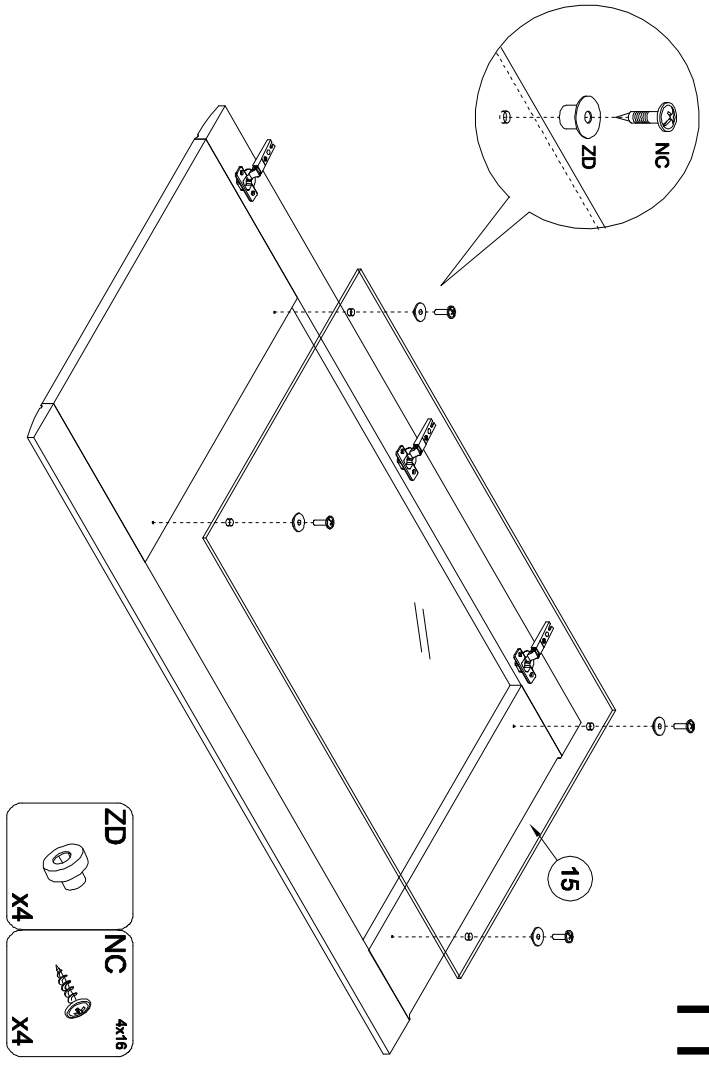


12

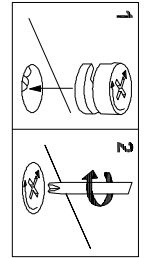


- Z**
X8
- C**
X8

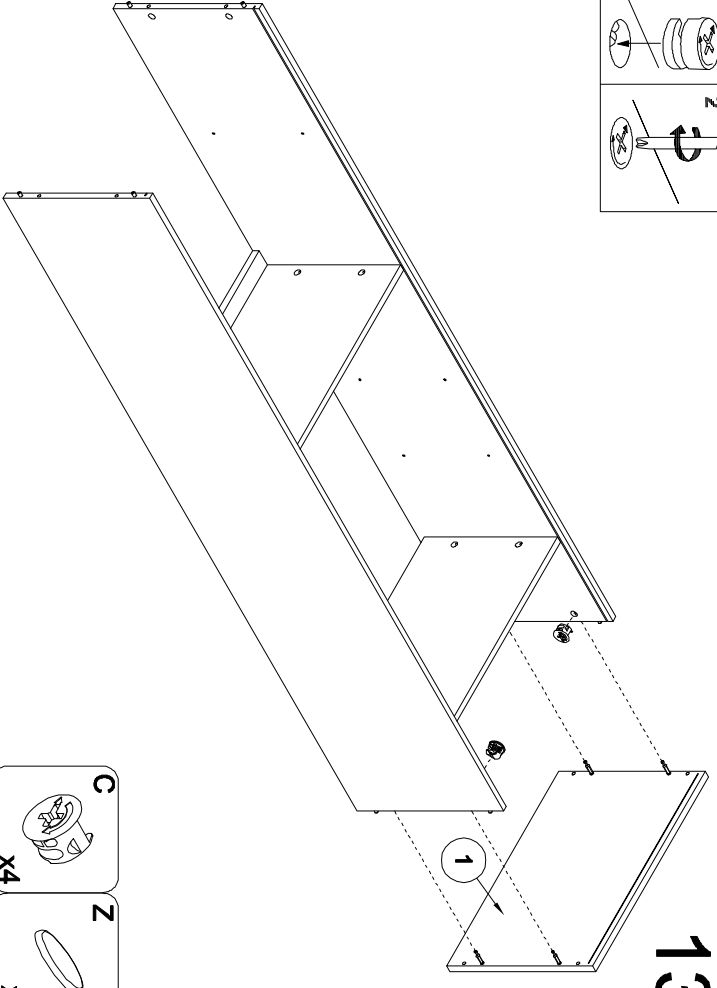
11



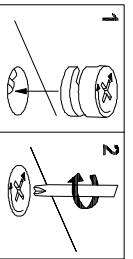
- ZD**
X4
- NC** 4x16
X4



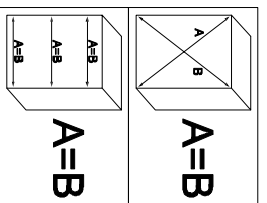
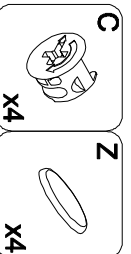
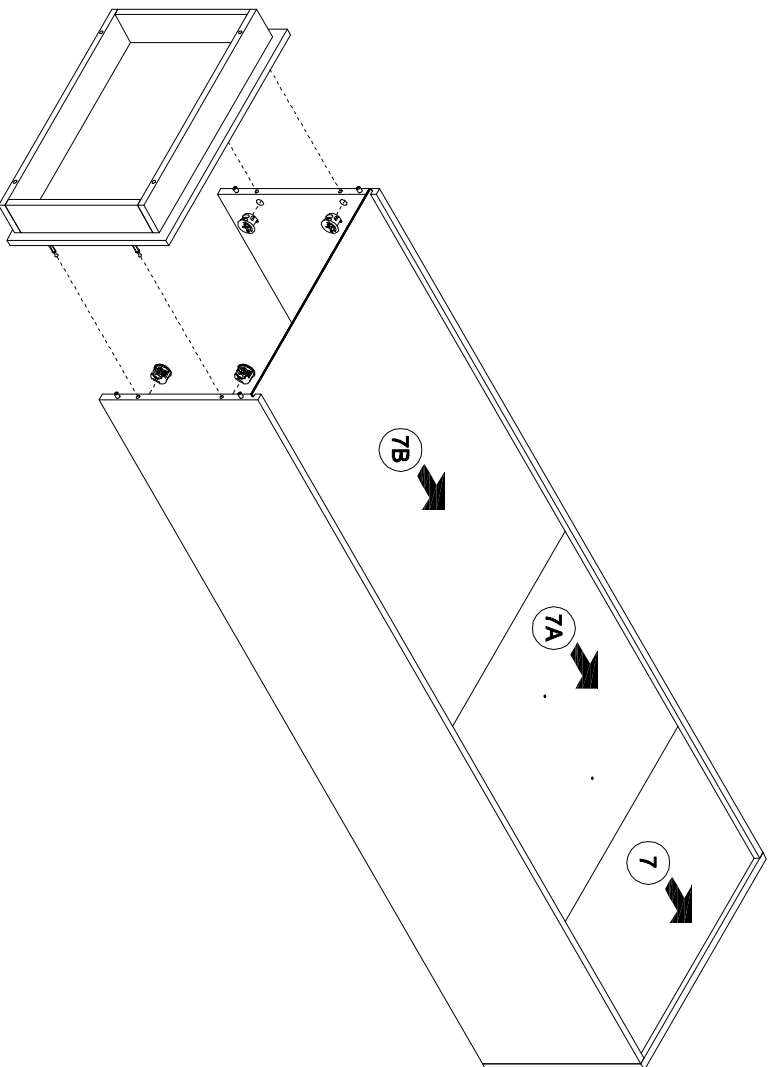
13



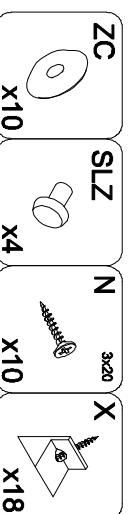
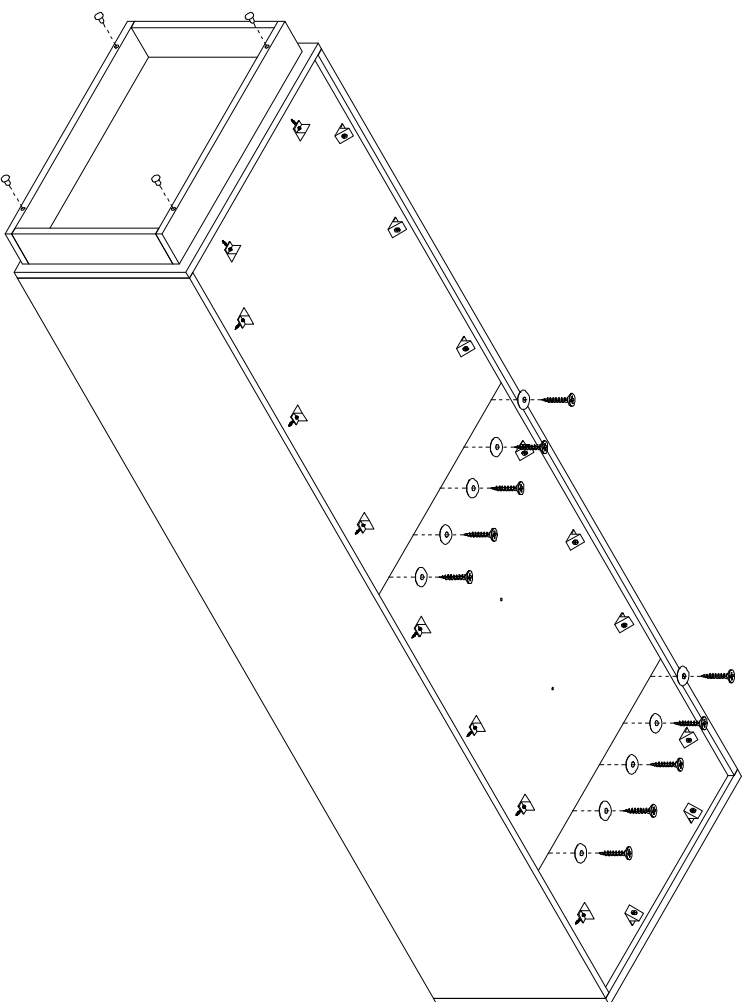
- Z**
X4
- C**
X4

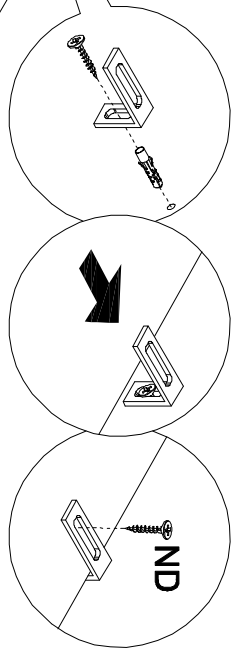
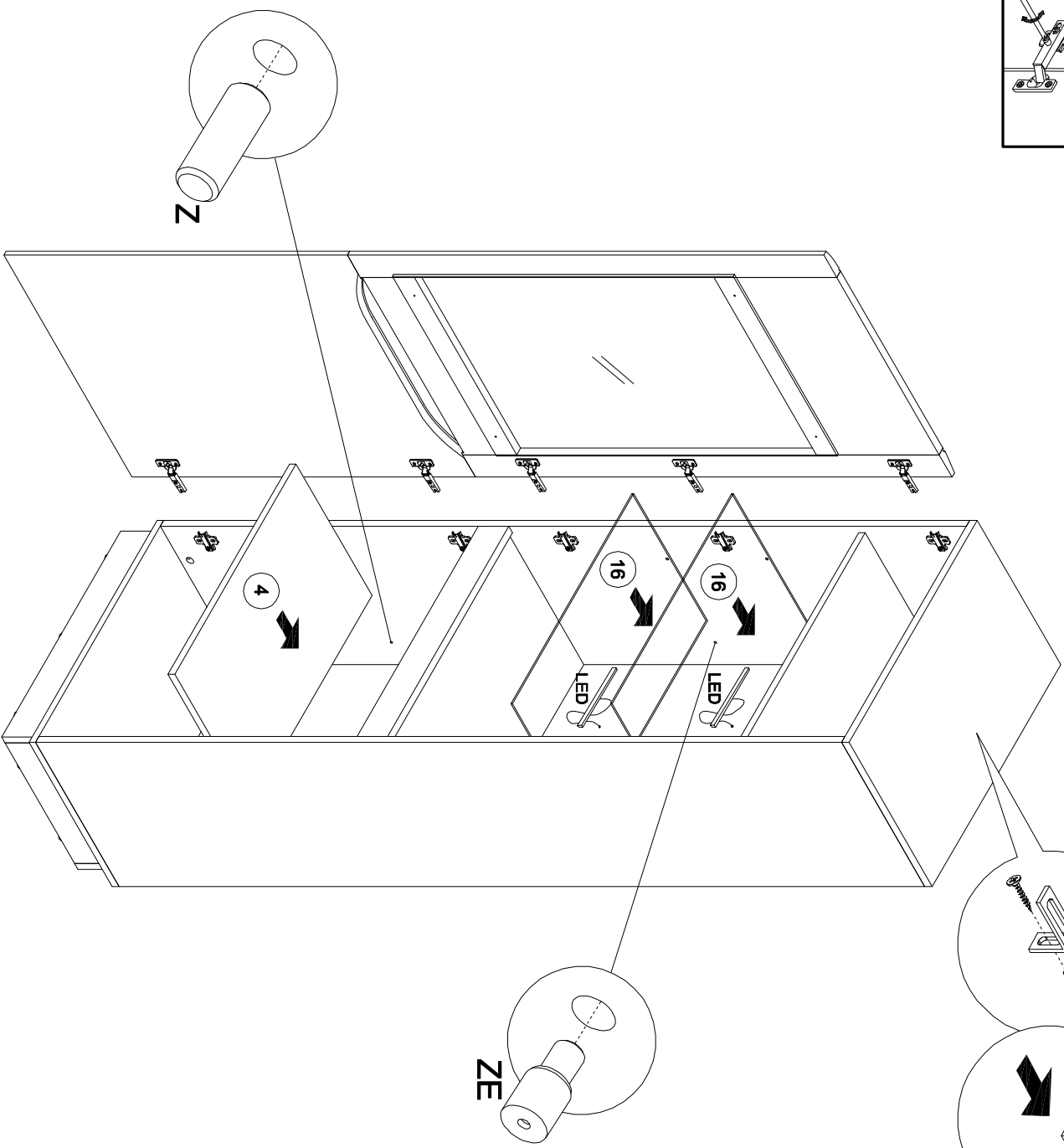
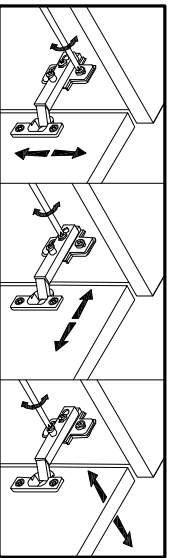


14



15





- | | | |
|----------|----------|--------------------|
| TA
x1 | TB
x1 | ND
3.5x16
x1 |
| ZE
x8 | Z
x4 | |